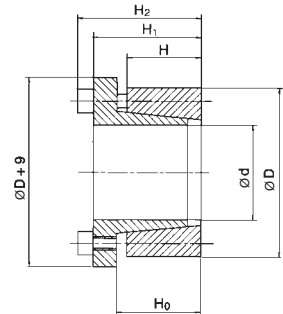
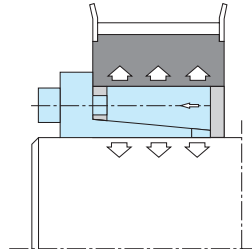


SIT-LOCK® 7 - Self-Centering

Locking assembly with single taper design. Provides good concentricity and self centering. It is recommended for medium torques and is self-centring.

The flange design prevents axial movement during installation. **It is suitable for applications with medium torques, and need very precise axial positioning.**



Installation

Carefully clean contact surfaces of shaft and hub. Then, lightly oil both surfaces with standard mineral oil. Position the SIT-LOCK® on the shaft and into the hub machined bore. Align them as required by the application. Gradually and uniformly tighten the locking screws to the tightening torque (Ms).

You must tighten the screws in diametrically opposite sequence in stages:

- hand tighten the screws until the surfaces are in contact

- carefully check the position of the hub on the shaft
- tighten the screws to half the value of the tightening torque (Ms) stated in the catalogue
- repeat the operation until the tightening torque is reached using the dynamometric screw-driver
- check every locking screw to insure it has been tightened to the specific tightening torque

Do not use lubricant like "Molykote" or molybdenum disulfide based oils.

Removal

Gradually loosen all locking screws. Remove and transfer the screws into the releasing tapped holes and tighten them until the SIT-LOCK® is released.

Note: To reuse the locking element, carefully oil the screws and the conical surfaces, then follow installation instructions.

Concentricity

For self-centering locking assemblies the clamping element has a centering effect and the concentricity error can be considered 0.02-0.04 mm.

Maximum allowable roughness
Rt 16 µm
Maximum recommended tolerance
shaft h 8 - hub H 8

SIT-LOCK® 7

Dimensions [mm]					Performances		Pressure [N/mm ²]		Clamping screws (DIN 912 - 12,9)		
d x D	H	H ₀	H ₁	H ₂	M _T [Nm]	F _{ax} [kN]	p _w	p _n	N°	Tipo	M _s [Nm]
20 x 47	17	22	28	34	284	28	222	94	5	M 6	17
22 x 47	17	22	28	34	313	28	202	94	5	M 6	17
24 x 50	17	22	28	34	341	28	185	89	5	M 6	17
25 x 50	17	22	28	34	426	34	213	106	6	M 6	17
28 x 55	17	22	28	34	478	34	190	97	6	M 6	17
30 x 55	17	22	28	34	512	34	177	97	6	M 6	17
32 x 60	17	22	28	34	728	45	222	118	8	M 6	17
35 x 60	17	22	28	34	796	45	203	118	8	M 6	17
38 x 65	17	22	28	34	864	45	187	109	8	M 6	17
40 x 65	17	22	28	34	910	45	177	109	8	M 6	17
42 x 75	20	25	33	41	1.544	74	232	130	7	M 8	41
45 x 75	20	25	33	41	1.655	74	217	130	7	M 8	41
48 x 80	20	25	33	41	1.765	74	203	122	7	M 8	41
50 x 80	20	25	33	41	1.838	74	195	122	7	M 8	41
55 x 85	20	25	33	41	2.311	84	203	131	8	M 8	41
60 x 90	20	25	33	41	2.521	84	186	124	8	M 8	41
65 x 95	20	25	33	41	3.073	95	193	132	9	M 8	41
70 x 110	24	30	40	50	4.670	133	211	134	8	M10	83
75 x 115	24	30	40	50	5.004	133	197	128	8	M10	83
80 x 120	24	30	40	50	5.338	133	184	123	8	M10	83
85 x 125	24	30	40	50	6.380	150	195	133	9	M10	83
90 x 130	24	30	40	50	6.755	150	184	128	9	M10	83
95 x 135	24	30	40	50	7.923	167	194	137	10	M10	83
100 x 145	26	32	44	56	9.714	194	198	137	8	M12	145
110 x 155	26	32	44	56	10.686	194	180	128	8	M12	145
120 x 165	26	32	44	56	13.114	219	186	135	9	M12	145
130 x 180	34	40	54	64	18.943	291	175	126	12	M12	145
140 x 190	34	40	54	68	20.993	300	167	123	9	M14	230
150 x 200	34	40	54	68	24.992	333	173	130	10	M14	230
160 x 210	34	40	54	68	29.324	367	179	136	11	M14	230
170 x 225	44	50	64	78	33.989	400	142	107	12	M14	230
180 x 235	44	50	64	78	35.989	400	134	103	12	M14	230
190 x 250	44	50	64	78	47.485	500	159	121	15	M14	230
200 x 260	44	50	64	78	49.984	500	151	116	15	M14	230

M _S	Screw tightening torque	Nm
M _T	Transmissible torque moment	Nm
F _{ax}	Transmissible axial load	N
p _w	Shaft pressure	N/mm ²
p _n	Hub pressure	N/mm ²

SIT-LOCK®